

COUNTY OF RIVERSIDE AUDITOR-CONTROLLER'S OFFICE

# Fixed Charge Processing

---

Fiscal Year 2017-2018

Final

7/31/17



## TABLE OF CONTENTS

	Page Number
General Information .....	3
Submitting an Assessment Listing.....	5
Schedule for 2017-2018.....	6
Reporting to Agencies.....	7
Fixed Charge Corrections.....	7
Sample Fixed Charge Correction letter for less than 20 parcels (Manual).....	9
Requirement for request of 20 or more changes (Batch) .....	10
Sample Fixed Charge Correction letter for more than 20 parcels (Batch) ....	11
Sample Copy of Corrections from Text File .....	12
State Board of Equalization Reporting.....	13
Sample Signature Form.....	14
Compliance with Propositions 218 Letter.....	15
Fixed Charge Request Form (for Roll Information).....	16
ACO Secured FTP Instructions (Access/Upload) .....	18
Request to Establish a New Fixed Charge Fund Number (68) .....	21
SBE Fixed Charge Reporting Form .....	22

## APPLYING SPECIAL ASSESSMENTS TO THE TAX ROLLS

### 1) GENERAL INFORMATION

- a) Before special assessments may be placed on the County tax rolls, a contract for their collection must be executed between the governing body of the agency and the County Board of Supervisors. Once this contract has been entered into, it is effective for any special assessment of that agency and remains in effect until rescinded by either of the parties concerned.
- b) Compliance with the provisions of Proposition 218, the Right to Vote on Taxes Initiative will be a responsibility of the City or District. A compliance letter is required for each district number and must be signed by the City or District Manager (See form on page 15).
- c) Pursuant to Section 29142, 27013, 29304 and 50077 of the Government Code, the County Auditor Controller is authorized to charge for the cost of applying special assessments to the tax roll. This charge is \$0.12 per assessment for each time a file is submitted whether it is accepted or rejected. There is an additional per district fee of \$121.98 per annual submittal in addition to the \$0.12 per assessment.
- d) Pursuant to Section 50077 of the Government Code and numerous other code sections, the County Treasurer-Tax Collector is authorized to charge for the collection of special assessments included on the tax bill. This year's annual charge is \$0.33 per assessment. This charge is in addition to the Auditor-Controller's Office charges, and will be recovered on the first current secured settlement apportionment.
- e) The Auditor-Controller's Office (ACO) charge is based on applying the assessment to the tax roll, not for the collection of such taxes. Because of the nature of the charge, the County will recover its total charge on the first current secured settlement apportionment, regardless of which property owners paid their assessments. After this adjustment is made, the agency will receive the full amount collected from the property owners.
- f) If your agency applies credits from successor agency funding, this office is not concerned with the amount of the credit or the amount of the original charge. Provide only the final amount to be collected from the County tax rolls. Amounts ending in odd cents will be rounded down to the even cent in order to accommodate equal installment billing.
- g) There is a charge of \$0.12 per assessment for any rejects being **resubmitted before the August 21** deadline. The \$0.12 per assessment charge applies to ALL initial submissions and resubmissions of assessments rejected or not. For example:

- 1) The agency submits fund/district 68-0001 with 100 assessments and after it is processed, only 95 assessments are accepted and 5 assessments are rejected and need to be resubmitted. Therefore, the agency will be charged on the following:

- a) 1 district x \$121.98 = \$ 121.98
- b) 100 assessments x \$ 0.12 = \$ 12.00

-----  
Total \$ 131.98

- 2) If the agency resubmits corrections with only 5 assessments and the FTP submittal is only 5 assessments for correction, the agency will be charged on the following:
  - a) 5 assessments x \$0.12 = \$0.60
- 3) If the agency resubmits corrections with only 5 assessments, but the FTP submittal includes the entire file of 100 assessments again, the agency will be charged on the following:
  - a) 100 assessments x \$0.12 = \$ 12.00

**Note: There will be no adjustments allowed for the month of September due to Secured extension processing.**

(Please call Roselyn Prasad at (951) 955-8510 if you have any questions.)

- h) Any corrections requested AFTER secured extension which is the fourth Monday in September will require a corrected tax bill. The district will be required to send a letter to the taxpayer notifying them of the correction.** Current year correction requests will be accommodated through **October 31<sup>st</sup>** only. Any other requests for current year special assessment corrections received after October 31<sup>st</sup> shall be subject to approval by the Office of the Treasurer-Tax Collector. The charges for the corrected tax bills are:

Manual Corrections - \$ 67.09 per corrections, per fund, per assessment per tax year or  
 Batch Corrections - \$126.13 per batch plus \$0.12 per assessment, per fund and per tax year  
 for computer generated corrections an ASCII format data text file can be emailed in notepad text with a minimum of 20 parcels.

**In addition to this fee, the Tax Collector's Office will also charge \$ 7.94 per assessment for any changes that result in a corrected bill being produced.**

Charges will be deducted from the current secured apportionment. Therefore, it is not recommended that the agency collect directly from any property owner after the assessment has been applied to the tax roll. If an error occurred, there are three alternatives:

- 1) Request an amended tax bill signed by the authorized person(s).
  - 2) Have the property owner pay the tax bill, show proof of payment then reimburse directly to the taxpayer.
  - 3) Provide the taxpayer with a check for the incorrect assessment amount payable to the County Tax Collector so the property owner may include that payment with his own payment toward the tax bill.
- i) Throughout the year, many agencies adopt resolutions declaring the charge of abatement of public nuisances is to be collected on the tax rolls. Those resolutions to be recorded as liens should be sent to the Assessor-County Clerk-Recorder's Office immediately. However, it is recommended that you retain the Auditor-Controller's Office copy for submission in August. Then, only submit those that remain unpaid at that time. If the Auditor-Controller's Office receives an abatement charge resolution outside of the processing period, and it is not accompanied by a request for an amended tax bill, it will be held pending the next year's tax roll. Notification of any subsequent payment or recorded release of lien may not occur, and the charge might be placed on the tax roll erroneously.**

## 2) SUBMITTING ASSESSMENT LISTING

- a) **The Auditor-Controller's Office accepts only FTP files** for data transfer. Data should be transmitted electronically as instructed on pages 18-20 of this package. If you are also recording these assessments as liens against the property, there must be a separate mailing to the Assessor-County Clerk-Recorder's Office at P.O. Box 751, Riverside, CA 92502-0751. The Assessor-County Clerk-Recorder's Office does not analyze any documents sent to them to determine whether they shall be forwarded to the Auditor-Controller's Office, nor does the Auditor-Controller's forward any listing to the Assessor-County Clerk-Recorder's Office.
- b) A copy of a resolution ordinance of your governing body must accompany your electronic data. A resolution must state the following:
- 1) The charge is in compliance with all laws pertaining to the levy of the particular assessment.
  - 2) The specific code section must be cited.
  - 3) The charge is levied without regard to property valuation.
  - 4) The purpose of the special assessment.
  - 5) Type or handwrite the county assigned fund/district number (68-XXXX) on the top right hand corner of the resolution and indicate whether it is 1915 Act assessment fund number or not.

- c) Include a total parcel count and a total dollar amount by fund (district). This will assist us in verifying the accuracy of the initial input. Format should be as follow:

<u>Fund (district) Number</u>	<u>Total Assessments</u>	<u>Total Charge</u>
68-XXXX	0,000	\$0,000.00

**Any package sent without this summary will not be processed.**

- d) A cover letter should be included with a telephone number, e-mail address and a contact person. This contact person information will be provided to taxpayer's with assessment inquiries and posted on our website. This contact number will also be printed on our tax bills. If you have separate contact information for our office, you may send us two contacts: One for the public, and one for our office use only.
- e) If you will be making any corrections or adjustments to these charges during the year, please send in a signed signature form from an authorized person. (See sample form on page 14).

Please follow the procedures below for the correct format for your data.

- f) The only **three** items that should be on your FTP files are:
- 1) The assessment number (including check-digit number).
  - 2) Your fund/district number.
  - 3) The amount of charge for that assessment.
- g) The FTP file name format must be in this format: 68XXXX.
- 1) Please include only one fund/district per file name.
  - 2) The naming convention for the file is your six-digit fund number/district number.  
For example: 68XXXX.txt

h) The FTP file data must have ASCII format: Numeric Only (no dash/hyphen in the filename) and single spacing.

- 1) **3 columns**
  - **Column 1 format: 6 blanks spaces, 10 characters**
  - **Column 2 format: 1 blank space, 6 characters**
  - **Column 3 format: 2 blanks spaces, 9 characters**

XXXXXXXXXX XXXXXX XXXXXXXXXXXX  
XXXXXXXXXX XXXXXX XXXXXXXXXXXX

Record Format:	<u>Data</u>	<u>Position</u>
	Blank	1 - 6
	Assessment Number	7 - 15
	Check Digit	16
	Blank	17
	Fund Number	18 - 23
	Blank	24 - 25
	Amount	26 - 34 (999999999)
	(9 characters, Including 2 decimals)	

i) Charges to be entered for property on the State Board of Equalization (utility) roll should be submitted on a separate listing. These charges are applied to the tax rolls by an alternative manual procedure (see enclosed form on page 22).

### 3) SCHEDULE FOR 2017-2018

Submit your original electronic data any time after July 1<sup>st</sup>, but no later than August 15.<sup>th</sup> **Corrections must be turned in by August 21.** Every effort will be made by the ACO to send an electronic “error report” to the provided e-mail address. Please be advised that you will be charged again, if you are resubmitting rejected assessments. The fee for each assessment is **\$0.12** each.

**Rejects must be returned to the Auditor-Controllers Office by August 21 in order to be placed on the tax roll. Any other requests for current year special assessment corrections received after October 31<sup>st</sup> shall be subject to approval by the Office of the Treasurer-Tax Collector.**

The County tax rolls are usually extended during the second week in September. Any individual problems must be resolved by August 21. Written notification of these changes should be received by the Auditor-Controller’s Office before that date. If your written notification will not reach us by August 21, a phone call in addition to the letter will suffice. Please call or email us if there are any other problems or any questions about last minute items. You may contact Roselyn Prasad by phone at (951) 955-8510 or by e-mail at [roprasad@rivco.org](mailto:roprasad@rivco.org).

### 4) REPORTING TO AGENCIES

Once we have processed your data for entry to the tax rolls, we will e-mail a report listing the accepted assessments. This report lists only those assessments that were successfully applied. If you submit two amounts for the same assessment number, our system will only accept the last amount submitted. **It is highly recommended that charges applied to the tax rolls be reconciled to your own assessment lists.**

In addition, we will e-mail a listing of the rejected assessments. This listing should be reviewed **immediately**. The Assessor-County Clerk-Recorder's Office can provide the correct assessment number. These corrections need to be **resubmitted** to the Auditor-Controller's Office as soon as possible. The fee for re-submittal of rejected assessments is **\$0.12** per assessment. If it is **not possible to resubmit** the corrections before extension of the property tax roll, **the corrections can be added to the roll by the Roll Change Section** with an **additional charge of \$67.09 per manual or \$126.13 per batch plus \$0.12 per each assessment. Plus \$7.94 Tax Collector's Fee for corrections resulting in a corrected tax bill to be mailed. After the roll has been extended and the tax bill produced, any corrections can be added to the roll through October 31<sup>st</sup>. All correction fees will apply.**

*Note: The correction will generate a corrected tax bill to be mailed by the Tax Collector's Office.*

After the end of each secured tax collection period, we will post a listing of paid and unpaid assessments on our web site at:

<http://www.auditorcontroller.org/Divisions/PropertyTaxDivision/FixedChargePaidUnpaid.aspx>

## 5) ROLL CHANGE SECTION

The deadline for current year roll changes is October 31, 2017. Any other requests for current year special assessment *corrections* received after October 31<sup>st</sup> shall be subject to approval by both the Office of the Auditor-Controller and the Office of the Treasurer-Tax Collector.

**NOTE: The Auditor-Controller's office will not issue refunds for Current Year or Prior Year Fixed Charge requests. It is the District's responsibility to process the refund.**

### **Current Year request:**

If the *first installment* is paid and the *second* is not paid – The Auditor-Controller's Office can remove the *second installment* and the district is to refund the paid *first installment*.

If fully paid – District is to refund

### **Prior Year request:**

If fully paid – District is to refund.

**Instructions for fixed charge corrections AFTER the August 21 deadline:**

As of July 1, 2017, only information received in the following approved format will be accepted for processing of fixed charge corrections to the Property Tax Roll. Requests that do not conform to this format will be returned to the City or District. Requests must be made on your **City or District letterhead** and signed by an **authorized** person from that City or District, (see sample letter on page 11). An authorized signature form is enclosed (see page 14). Once received by the Auditor-Controller’s Office, it will be kept on file for future verification. Faxed copies or photocopies of requests will not be accepted. Requests must include:

- 1) A brief description of the reason for the change. EXAMPLE: City or District error; paid directly to City or District; or removing charges due to foreclosure procedures. See Revenue & Taxation Codes:

4832.00	<b>District error</b> - Allow the taxpayer 30 days to pay with no penalty.
4832.50	<b>Paid directly to the district or city</b> - Does not allow 30 days to pay.
4832.99	<b>District Foreclosure</b> - Does not allow 30 days to pay. If the assessment is PAID or REDEEMED, the charge cannot be removed.

- 2) Assessment Number: Must be a complete 10-digit number. (XXX-XXX-XXX-X) (Nine-digit assessment number and check-digit).
- 3) Tax Year: Indicate fiscal tax year of the change.
- 4) Fund Number: Must be a six-digit number such as: 68-XXXX.
- 5) Total number of changes per fund.
- 6) Current and new charge amounts: Use the total amount currently on the tax roll; do not break down by installment amount, and do not include penalty, interest or other charges.
- 7) For each correction made, a charge per assessment, per tax year, per fund will be deducted from the current secured apportionment.
- 8) If the removal request is a district foreclosure action, please provide a **RECORDED COPY** of the “Notice of Intent to Remove Delinquent Assessment Installments from the Tax Roll” with your letter. There will be a delay in processing if the recorded copy is not attached.

**The following is a sample of required data for fixed charge changes (see sample letters for manual and batch requests, p. 9 and 11, respectively):**

<u>Assessment No.</u>	<u>Tax Year</u>	<u>Fund Number</u>	<u>Current Amount</u>	<u>New Amount</u>
123-456-789-0	2012-2013	68-XXXX	250.00	0.00
345-456-678-9	2012-2013	68-XXXX	1,345.78	789.56

**The following is a list of fees for fixed charge changes:**

- \$67.09 for manual corrections per year, per fund/district and per assessment
- \$126.13 for computer generated batch requests of 20 assessments or more on CD plus \$0.12 per assessment
- \$7.94 per assessment for Tax Collector’s fee

**If you have any questions regarding corrections, please contact Roselyn Prasad (951) 955-8510.**



**SAMPLE LETTER FOR MANUAL FIXED CHARGE CORRECTIONS**  
**\*NOTE: USE THIS LETTER FOR LESS THAN 20 PARCELS**

**CITY OR DISTRICT LETTER HEAD**

**Date:**

**To:** County of Riverside  
Office of the Auditor-Controller  
Roll Change Section  
4080 Lemon St. 11<sup>th</sup> Floor  
P O Box 1326  
Riverside, CA 92502-1326

**Attention:** Roselyn Prasad

**Subject:** **Request for Changes to (Fiscal Year) Fixed Charges**  
**District Name (City, School etc....)**  
**Fund 68-XXXX Request Total (Number of changes)**

Due to (your reason), please (remove, reduce or add) the following fixed charges from the (fiscal year) tax roll:

<u>Assessment No.</u>	<u>Tax Year</u>	<u>Fund</u>	<u>Current Amount</u>	<u>New Amount</u>
000000000-0	0000-0000	68-XXXX	\$0000.00	\$0000.00

If you have any questions or require additional information, please contact (District contact name) at (Contact phone number).

Sincerely,

AN AUTHORIZED SIGNATURE

## REQUIREMENTS FOR BATCH REQUESTS OF 20 OR MORE CHANGES

Instructions for fixed charge corrections AFTER the August 21 deadline

- 1) Current or prior year corrections are to be submitted via email in **ASCII** format as shown below. **Do not** mix current and prior year corrections on the same file. If working with one fund number, you must list lowest assessment number first. If working with multiple fund numbers, you must list the lowest fund number followed by the lowest assessment in that fund. This is for **unpaid or half-paid** assessments only. **Paid** assessments will reject.
- 2) A letter with an authorized signature must be mailed to the Auditor's office and all the information currently required for the roll change must be emailed in notepad text file in ASCII format.
- 3) A print out of the corrections as they appear on the text file must also accompany the letter.
- 4) See the sample letter and print out of corrections, as they should appear on the text file.

Roll changes of less than 20 assessments must be submitted following the instructions on page 7.

Please contact **Roselyn Prasad** with any questions regarding **corrections**.  
(951) 955-8510 ACO Property Tax Division - Roll Change Section

Record Format Requirements:

### CURRENT OR PRIOR YEAR ASCII CHARACTER SET RECORD LENGTHS 53 Bytes Long

	<u>DATA</u>	<u>ALLOCATED SPACE</u>
<b>RECORD FORMAT:</b>	Assessment Number	9(9)
	Check Digit	9(1)
	Filler	X(1)
	Year 1	9999
	Year 2	9999
	Fund Number	9(6)
	Filler	X(4)
	Old Charge	9(10)v99
	New Charge	9(10)v99

**SAMPLE LETTER FOR BATCH FIXED CHARGE CORRECTIONS**  
**\*NOTE: USE THIS LETTER FOR 20 OR MORE PARCELS**

**CITY OR DISTRICT LETTER HEAD**

**Date:**

**To:** County of Riverside  
Office of the Auditor-Controller  
Roll Change Section  
4080 Lemon St. 11<sup>th</sup> Floor  
PO Box 1326  
Riverside, CA 92502-1326

**Attention:** Roselyn Prasad

**Subject:** Request for Changes to (Fiscal Year) Fixed Charges  
District Name (City, School etc....)  
Fund 68-XXXX Request Total (Number of changes)

Due to (your reason), please (remove, reduce or add) the following fixed charges from the (fiscal year) tax roll:

<u>District</u> (Description)	<u>Tax Year</u>	<u>Fund</u>	<u>Current Amount</u>	<u>New Amount</u>
	0000-0000	68-XXXX	\$0000.00	\$0000.00

An email of the list of corrections in notepad text file in ASCII format along with a printout copy of the corrections as they appear on the notepad text file.

If you have any questions or require additional information, please contact (district contact name) at (contact phone number).

Sincerely,

AN AUTHORIZED SIGNATURE

**Sample copy of required format of Corrections on the notepad text file.**

3080200463	20052006680000	000000287700000000309400
3080200540	20052006680000	000000654500000000119000
3080200551	20052006680000	000000702100000000142800
3161100019	20052006680000	000000000000000000392700
3161100097	20052006680000	000000238000000000127800
4771400052	20052006680000	000000461200000000000000
4771400117	20052006680000	0000000000000000000761600
4771400128	20052006680000	0000000000000000000440300
4772200060	20052006680000	0000004879000000000464100
4772200071	20052006680000	0000004998000000000487900
4772200136	20052006680000	0000003808000000000261800
4772200147	20052006680000	0000001190000000000071400
4772200169	20052006680000	000000261800000000142800
4780200036	20052006680000	000000035700000000119000
4780200047	20052006680000	000000035700000000119000
4780200058	20052006680000	000000035700000000119000
4780200069	20052006680000	000000047600000000130900
4780200070	20052006680000	000000166000000000452200
4780300059	20052006680000	000000333200000000238000

**STATE BOARD OF EQUALIZATION FIXED CHARGES**  
**\*\*\*Important Changes, Please Read carefully\*\*\***  
**Deadline for SBE Fixed Charge submittal is August 21, 2017**

The State Board of Equalization (SBE) is responsible for assessing properties associated with statewide companies such as railroads, telephones or telegraphs, electric or gas and other utilities. SBE assigns independent numbers to identify these utilities. These numbers are not in our computer system. Questions regarding the State-assessed assessment information should be referred to the State Board of Equalization Valuation Division at (916) 324-2794.

Per legislation contained in AB454, unitary property is appraised using the unit value principle and is the primary operative property of the utility. Because of this legislative change, about 90 percent of SBE parcels are reported to us under this "unitary" classification and all Unitary SBE parcels are now identified to our office by SBE using a designated, yet nonexistent County-Wide TRA number 000-001, regardless of the parcels actual location.

On September 29, 2006, Assembly Bill 2670 was enacted to provide for the establishment of a single County-Wide Tax Rate Area 000-002 for **qualifying regulated railway property**. Beginning with the 2007-2008 Board Roll of State-Assessed Property, the value of railroad unitary property will be allocated based on the total number of track miles in a county and placed in a general County-Wide Tax Rate Area 000-002.

On September 30, 2006, Senate Bill 1317 was enacted to add Revenue and Taxation Code 100.95 that changed the allocation of property tax revenues derived from state assessed qualified electric generation facilities, substation facilities, and transmission lines newly constructed by a public utility after January 1, 2007. Beginning with the 2008-2009 Board Roll of State-Assessed Property, the value of qualifying properties in Riverside County will be in a County-Wide Tax Rate Area 000-095.

Due to these amendments, the TRA numbers for the parcel number on which you place charges may have changed. To ensure your fixed charge will go to the correct TRA and to help facilitate your corrections, we encourage you to visit our website to check on the Board Roll of Assessed Property by TRA at <http://www.auditorcontroller.org/Divisions/PropertyTaxDivision/AssessedValuations.aspx>. We receive the roll in late July. The 2017 SBE Board Roll will be posted on our website on or before August 3, 2017.

Adding fixed charges to a SBE parcel is done electronically by sending an e-mail request to **Cris Arandia at carandia@rivco.org**. This form is in an Excel format as shown on page 22 and it must be completed correctly in order to ensure the proper utility is charged. To complete the form correctly, **do not** zero fill columns. Our system can process only one charge per fund per parcel. For several charges, combine them into one. As with the regular fixed charges, the charge will be rounded to accommodate billing in two equal installments.

The most common error with SBE fixed charges is the TRA selected. Please be sure you have selected the correct TRA and parcel. Maps identifying unitary TRA's are only available at the State level. Incorrect parcel and TRA information will not be levied. Requests for placements of charges on the SBE roll that do not match the assessment and TRA data on our system cannot be levied. **All incorrect data submitted to this office will be rejected and returned to your agency because we do not have the information available to make the determinations of assessment information.**

**CITY OR DISTRICT LETTERHEAD**

TO: County of Riverside Date: \_\_\_\_\_

**DISTRICT NAME:** \_\_\_\_\_

**SUBJECT:** Signature Sample of Personnel Authorized to Request Corrections to Fixed Charges on the Tax Roll

For fiscal year 2017-2018 and thereafter, the following personnel is authorized to request corrections to fixed charges on the tax roll. It is understood that the County of Riverside will not make a correction if requested by any other personnel.

<b>NAME AND TITLE</b>	<b>SIGNATURE</b>
_____	_____
_____	_____
_____	_____
_____	_____

**I (We) understand that charges will apply at the rate of \$67.09 for a manual correction, \$126.13 for batch requests, plus \$0.12 each assessment and \$7.94 each assessment for the Tax Collector’s Fee. Charges will be deducted from the current secured apportionment. Pre-payment will not be accepted.**

**APPROVED BY:** \_\_\_\_\_

**CITY OR DISTRICT MANAGER**

**CITY OR DISTRICT LETTERHEAD**

TO: Paul Angulo, CPA, MA  
Riverside County Auditor-Controller

FROM: \_\_\_\_\_

SUBJECT: Compliance with Proposition 218

DATE: \_\_\_\_\_

The City [District] of \_\_\_\_\_ represents that the charges associated with property tax district number 68-\_\_\_\_\_ identified on the county Tax Roll as \_\_\_\_\_ is in compliance with the articles of Proposition 218 cited below.

The County Auditor-Controller/County of Riverside agrees to enter all assessments, fees, charges, or taxes for the City [District] \_\_\_\_\_ upon receipt of such roll on or about August 15, 2017 based upon such certification.

The City[District] \_\_\_\_\_ shall be solely liable and responsible, and will defend, indemnify and hold the County and this office harmless from any liability as a result of claims or claims for refunds and related interest due filed by taxpayers against any assessments, fees, charges or taxes placed on the roll for the City[District] \_\_\_\_\_ by the County.

*Article XIII C. Sec.2 (c) "Any general tax imposed, extended, or increased, without voter approval, by any local government on or after January 1, 1995, and prior to the effective date of this article, shall continue to be imposed only if approved by a majority vote of the voters voting in an election on the issue of the imposition, which election shall be held within two years of the effective date of this article and in compliance with subdivision (b)."*

*Article XIII D. Sec. 5 "...this article shall become effective the day after the election unless otherwise provided. Beginning July 1, 1997, all existing, new, or increased assessments shall comply with this article."*

*Article XIII C. Sec.6 (d) "Beginning July 1, 1997, all fees or charges shall comply with this section."*

\_\_\_\_\_  
City [District] Date  
Attested By:  
District Secretary  
City Clerk

## SPECIAL DISTRICT FIXED CHARGE REQUEST FORM

<b>To:</b> Riverside County Assessor's Office Property Data Center 4080 Lemon St. 5 <sup>th</sup> Floor Riverside, CA 92502-2204 Fax: (951) 955-6261	Assessor's use only  14112001PVDC ___ 9104F
--	---

<b>Attn:</b> Mario Paz	(951) 955-9553	<b>Date:</b> _____
------------------------	----------------	--------------------

<b>From</b>	<b>Agency Name:</b> _____	<b>Fund#:</b> _____
<b>Address:</b> _____		
<b>City-State:</b> _____		<b>Zip Code:</b> _____
<b>Coordinator:</b> _____		<b>Phone:</b> _____
<b>Estimated Number of Parcels:</b> _____		<b>Date Required:</b> _____

**PLEASE INDICATE REQUIRED PRODUCTS- ORDER FROM THIS GROUP ANY TIME OF YEAR**

<u>ITEM:</u>	<u>CATALOG:</u>
<input type="checkbox"/> 1. Final Certified Assessment Roll (160 RecL) –Yearly {PURCHASE AGREEMENT REQUIRED}	ASX100C
<input type="checkbox"/> 14. Updated Monthly – 622 Record Length	KEYINFOX
<input type="checkbox"/> 15. Assessment Roll - 800 Record length	WORK100
<input type="checkbox"/> 16. Special Request Value Roll – 80 Record Length Computer Printout: # of copies ____	RQSTVALU
<input type="checkbox"/> CD-ROM    \$0.58c each <input type="checkbox"/> DVD    \$0.98c each    plus 8.00% media sales tax	

Note: File layouts, Use Codes and sample data files are available upon request.



**FIXED CHARGE REQUEST FORM**

---

\*\*\* Only Scheduled after the Assessor's Roll Closes -- First part of JULY \*\*\*

---

DISTRICT FIXED (ASDFXD):

ASDFXDEV: ELSINORE VALLEY WATER DISTRICT

ASDFXDRC: RANCHO CALIFORNIA WATER DISTRICT

---

DISTRICT COPY (ASDCPY):

ASCVCWD: Coachella Valley Water District

---

ASEMWDF: Eastern Municipal Water District Fixed Charges

ASDFH1 - Microfiche for EMWD on CD-ROM FICHE

---

DISTRICT LISTING (ASDLST2)

Computer Printout: Number of Copies:

---

To all customers of the Riverside County Assessor - Property Data Center:

On December 7, 2012, the Riverside County Board of Supervisors approved the Property Data Center billing rate of \$85 per hour for all data products. This new rate will be effective on January 1, 2013. From this day forward, this new rate will be applied to all Property Data Center products.

If you have any questions, please contact Mario Paz at (951) 955-9553 or email to: [mpaz@srclkrec.com](mailto:mpaz@srclkrec.com)

**Updated:**

**APRIL 22, 2015**

## ACO SECURED FTP INSTRUCTIONS

You will first need an SSH, FTP or WEB client which can negotiate over a secure protocol.

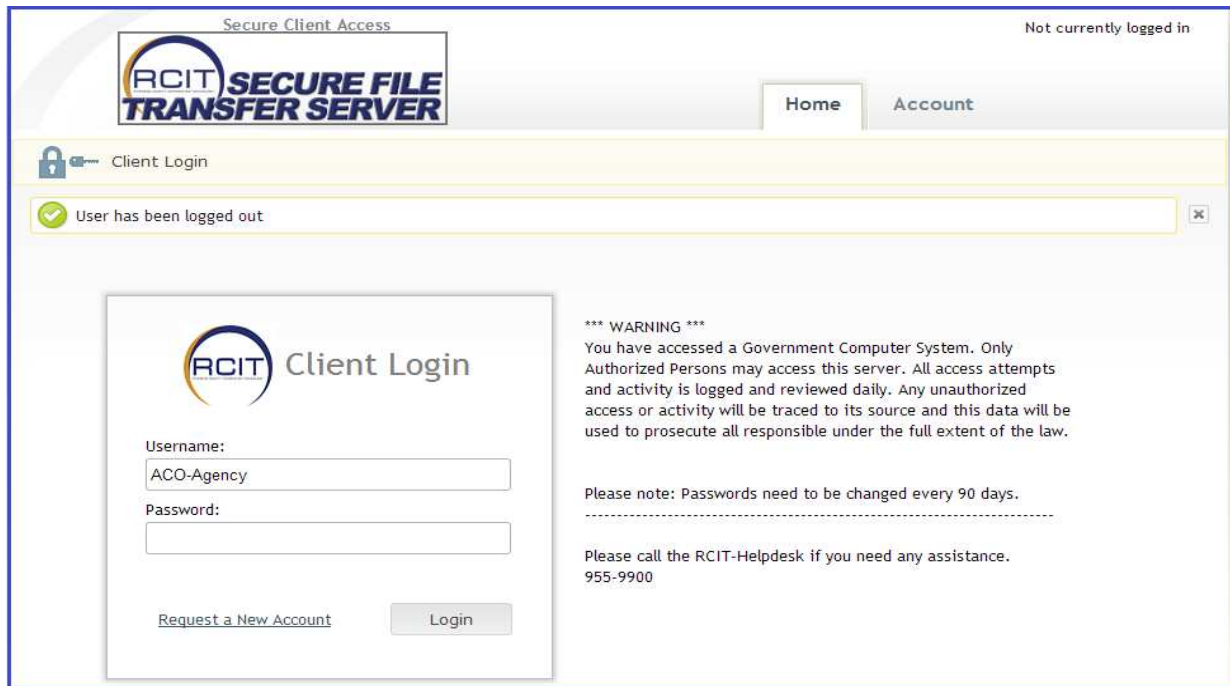
### **Option 1** --- **File Transfers Using a Web Browser**

The preferred method to transfer your files would be to use your web browser.

Open your web browser and navigate to <HTTPS://FTP.CO.RIVERSIDE.CA.US>

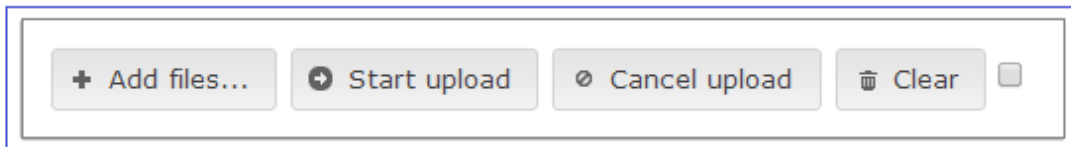
**User:** [ACO-Agency](#)

**Pass:** [PropTax11](#)



The screenshot shows the 'Secure Client Access' page for the RCIT Secure File Transfer Server. The page title is 'Secure Client Access' and it indicates 'Not currently logged in'. The main heading is 'RCIT SECURE FILE TRANSFER SERVER'. There are navigation links for 'Home' and 'Account'. A 'Client Login' section is visible, featuring a login form with fields for 'Username:' (containing 'ACO-Agency') and 'Password:'. Below the form are links for 'Request a New Account' and a 'Login' button. A warning message states: '\*\*\* WARNING \*\*\* You have accessed a Government Computer System. Only Authorized Persons may access this server. All access attempts and activity is logged and reviewed daily. Any unauthorized access or activity will be traced to its source and this data will be used to prosecute all responsible under the full extent of the law.' Below the warning, it notes: 'Please note: Passwords need to be changed every 90 days.' and provides contact information: 'Please call the RCIT-Helpdesk if you need any assistance. 955-9900'. A notification at the top left says 'User has been logged out'.

Once logged in, the following buttons will be available at the bottom of the page.



To upload files, simply add all files to be uploaded and then click Start Upload.

**Option 2** --- **File Transfers Using a File Transfer Client** ([WinSCP](#), [File Zilla](#), [COR FTP](#), etc., etc...)

Any FTP Client that supports **FTP over SSL** ([FTPS/FTPES](#)) will work.

I will provide instructions for **CoreFTP LE** client setup.

**CorFTP** can be downloaded for free by visiting the following site [www.coreftp.com](http://www.coreftp.com)

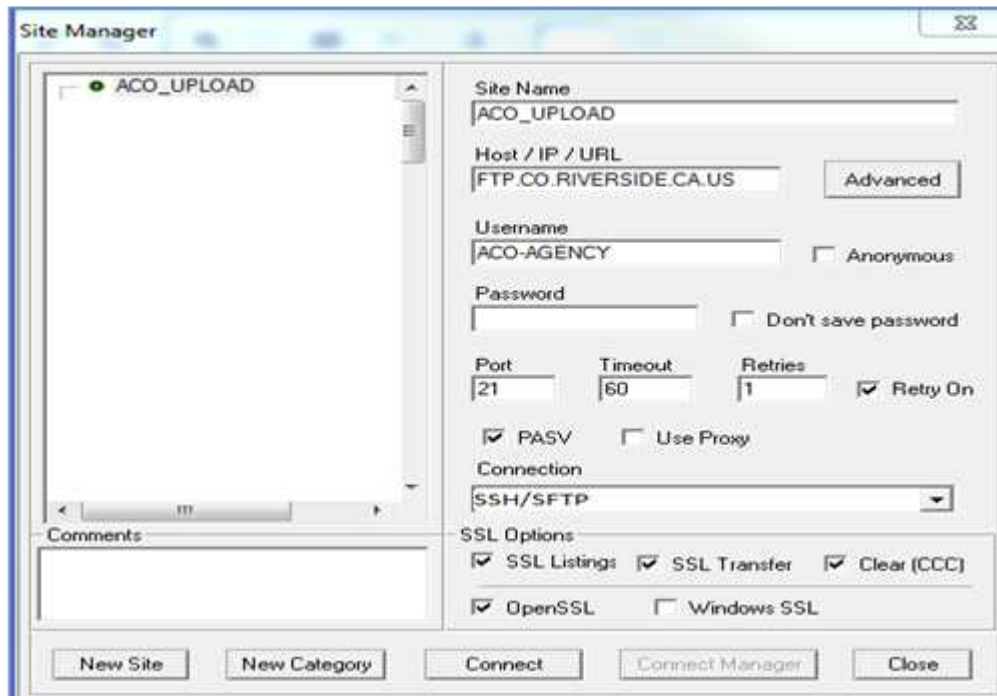
Download and install if needed. (Please use the defaults)

### **COR FTP Configuration Instructions**

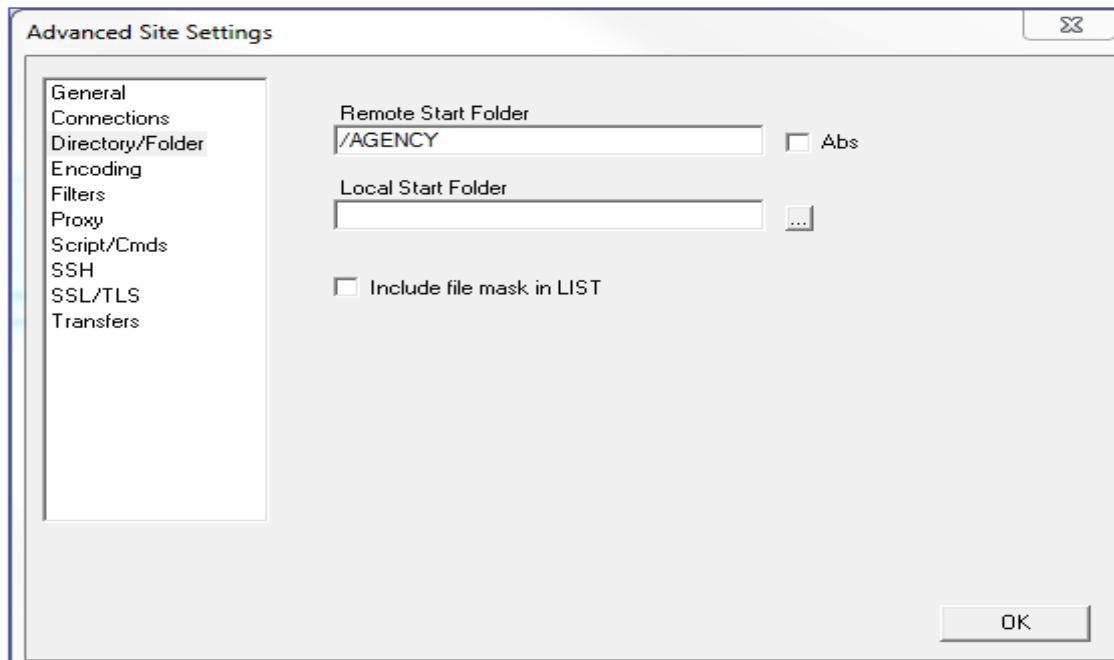
From the main menu, choose Sites / Site Manager then Click on New Site.

Fill in the fields with the information from below.

- 1) Hostname: [FTP.CO.RIVERSIDE.CA.US](#)
- 2) Username: [ACO-Agency](#)
- 3) Password: [PropTax11](#)
- 4) Connection type: [SSH/SFTP](#) (THIS IS UPDATED)
- 5) Click the Advanced button



Click Directory / Folder and set Remote Start Folder to [/AGENCY](#)



Click Ok

Use the defaults for the other settings.

You will be asked if you will accept a certificate from this server. Say **OK**.

In the LEFT pane you should see your files if you filled out the Local Start Folder field. If you did not, then you should be able to browse and find them. In the RIGHT pane, you should see no files. Since [AGENCY](#) folder is **Write only**, you will not be able to list or read files, even those you write or send via FTP.

For security reasons, we have implemented a policy for locking out account logins after five (5) failed login attempts. If you are unable to login, it is possible that the account has been locked because of failed attempts by you or others.

### **Here are the account details for 2017**

Username: [ACO-Agency](#)

Password: [PropTax11](#)

If you need assistance at any time (24/7), call the RCIT helpdesk at 951-955-9900 and ask for David Haynes.



**REQUEST TO ESTABLISH A NEW FIXED CHARGE FUND (DISTRICT) NUMBER (68)**

1. **New Fund (district) Name:** \_\_\_\_\_  
*(District name must include CFD, or AD in front of name, 32 characters only)*
2. **Contact for Auditor Controller Office:**  
Agency Name/Contact Person: \_\_\_\_\_  
Agency Address: \_\_\_\_\_  
Agency Phone Number/E-mail Address: \_\_\_\_\_
3. **Contact for Tax Payer:** *(this will be on tax bills and on our website)*  
Agency Phone Number/E-mail Address: \_\_\_\_\_
4. **Fixed Charge Paid and Unpaid Reports are available on our website only:**  
<http://www.auditorcontroller.org/Divisions/PropertyTaxDivision/FixedChargePaidUnpaid.aspx>
5. **Tax Warrants to be mailed to** (if receiving warrants):  
Agency Name: \_\_\_\_\_  
Agency Contact Person: \_\_\_\_\_  
Agency Address: \_\_\_\_\_  
Agency Phone Number: \_\_\_\_\_  
Agency E-mail Address: \_\_\_\_\_
6. **For the General Accounting Department: This is required if #4 above is completed, otherwise ignore.**  
Do you want a separate warrant for this new fund/district?  
YES \_\_\_ (You will get a new vendor number) NO \_\_\_ (You will share the same vendor number)  
What is your current vendor number? \_\_\_\_\_ (If you don't know, please call our office)
7. **Do you want to set up the Electronic Fund Transfer (EFT)?**  
YES \_\_\_\_\_ (Please call our office for instructions and forms)  
NO \_\_\_\_\_ (You will receive warrants in the mail)
8. **If your funds are being transfer via journal entries, please complete this, otherwise ignore.**  
Fund Number: \_\_\_\_\_  
Department ID (Dept. ID): \_\_\_\_\_
9. **Check if applicable for new fund:** (This is for our information only so we know if you are a teeter district or not)  
a) Teeter \_\_\_\_\_ b) Community Facility District \_\_\_\_\_ c) Assessment District \_\_\_\_\_  
d) Nuisance Abatement District \_\_\_\_\_ e) Building Abatement District \_\_\_\_\_ f) Tax district \_\_\_\_\_  
g) Fee District \_\_\_\_\_  
\*Community Facility, Assessment, Nuisance Abatement, and Building Abatement Districts cannot select to be a teeter district.
10. **Is this 1915 Act assessment fund?**  
a) Yes \_\_\_\_\_ b) No \_\_\_\_\_

\_\_\_\_\_  
Requested by (print your name)

\_\_\_\_\_  
Requested by (signature)

\_\_\_\_\_  
Date of request

\_\_\_\_\_  
Name of District requesting

\_\_\_\_\_  
Phone # of person requesting

\_\_\_\_\_  
E-mail address of person requesting

*Note: This request can only be signed by a District Representative.*

*Updated 07/12/17*

